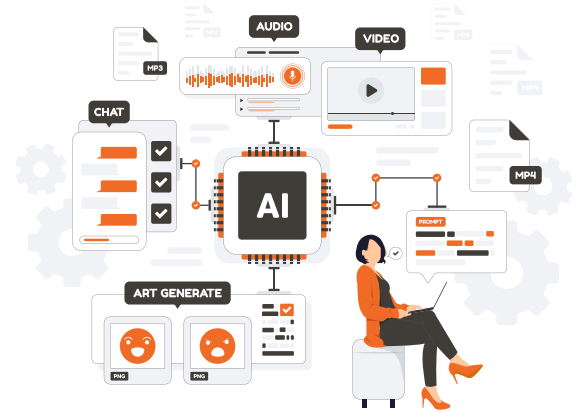


Breaking Down NLP, LLMs, and GenAI

Large language models (LLMs) like ChatGPT represent a significant shift in how AI can be used in business. Unlike traditional rule-based systems, these models leverage generative AI to understand and process natural language, enabling them to generate human-like text based on input.



This breakthrough in **natural language processing (NLP)** unlocks huge potential in various fields, from customer service to creative writing.



NLP

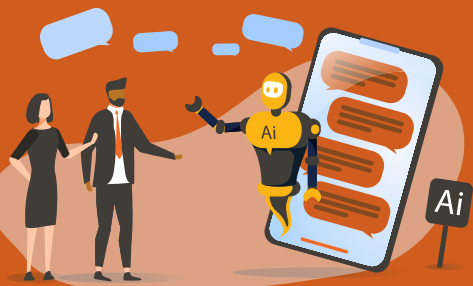
NLP is a subfield of Artificial Intelligence (AI) concerned with how computers understand and process human language.



LLMs

LLMs are powerful AI models trained on massive amounts of text data.

- They learn statistical relationships between words, allowing them to generate text, translate languages, write content, and answer questions.
- ChatGPT is a chatbot based on a LLM from the GPT family of generative AI models developed by OpenAI.



GenAI

Generative AI (also called GenAI) is a branch of artificial intelligence that focuses on creating new data, such as text, images, or code.